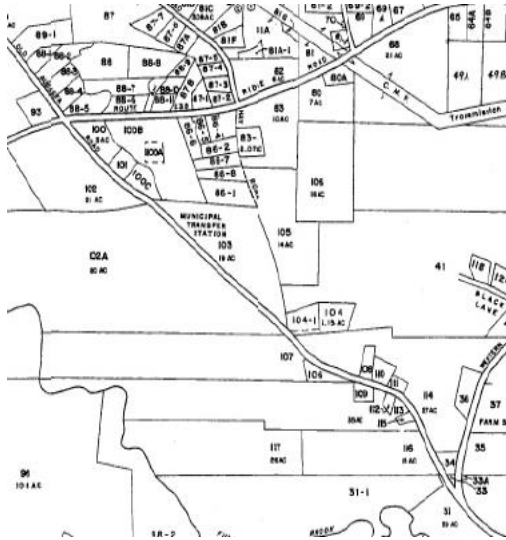


DIRECTIONS TO THE
TRANSFER STATION



From Route 90, take Western Road west (across from Bangor Savings Bank) toward Beth's White Oak Farm Stand. Just beyond the farm stand, bear left on to Old Augusta Road. The Transfer Station is located on the right a short distance down the road.

RECYCLE TODAY
FOR A
BETTER TOMORROW

WARREN
TRANSFER
STATION



Serving the
Residents & Taxpayers
of the
Town of Warren

WARREN
TRANSFER STATION

365 Old Augusta Road
Warren, ME 04864
Town Website
www.warrenmaine.org

HOURS OF OPERATION
Thursday 12 noon to 6 p.m.
Friday 12 noon to 6 p.m.
Saturday 8 a.m. to 4 p.m.

207-273-2290 – Transfer Station
207-273-2421 – Town Office

Our TRANSFER STATION

recycles:

- Clean glass food jars & beverage bottles
(clear green & brown)
- HPDE #2 plastic & rigid plastic
- Tin Cans
- Newspapers & Magazines
- Cardboard (broken down)
- Mixed Paper
- Tires
- Rechargeable Batteries
- Plastic Grocery Bags
- Cell Phones



RECYCLING FACTS

GLASS:

Never wears out – it can be recycled forever.
 Recycling a glass jar saves enough energy to
 light a bulb for four hours.
 For every ton of glass recycled, we save 1,330
 pounds of sand, 433 pounds of soda ash, 433
 pounds of limestone and 151 pounds of feldspar.

PAPER:

By recycling one ton of paper we save:

- 17 trees
- 6,953 gallons of water
- 463 gallons of oil
- 587 pounds of air pollution
- 3.06 cubic yards of landfill space
- 4,077 kilowatt hours of energy

PRICE LIST

Household Trash (MSW):

Purple Bag (35 gallon) per sleeve of 5	\$6.25
Purple Bag (55 gallon) per sleeve of 10	\$25.00
Per Yard	\$15.00

Tires:

Motorcycle (MCT)	\$3.00
Passenger (PT) 12"-17" Reg (LT) 16"-17"	\$4.00
Race Car (RCT)	\$4.00
Truck (TT) 19" -50" and up	\$20.00
Passenger Tire on Rim	\$4.00
Super Singles (SS)	\$14.00
ALL OTHER TIRES ON RIMS ARE DOUBLE THE FEE	

Demolition Debris:

Per Yard	\$25.00
Sleeper Sofa	\$9.00
Full Size Sofa	\$8.00
Recliner Chair	\$6.00
Love Seat	\$6.00
King Mattress	\$9.00
Queen Mattress or Box Spring	\$7.00
Full Mattress or Box Spring	\$7.00
Twin Mattress or Box Spring	\$6.00
Crib Mattress	\$3.00

White Good and Metals:

Refrigerator	\$10.00
Kitchen Stove	\$3.00
Hot Water Heater	\$3.00
Household Freezer	\$10.00
Air Conditioner	\$10.00
Dryer	\$3.00
Dishwasher	\$3.00
Riding Mower (fuel drained and battery removed)	\$3.00
Washing Machine	\$3.00
Furnace	\$3.00

PRICE LIST

Batteries:

Rechargeable up to two (2) pounds	
Small Batteries	FREE
(Nickle, Zinc, Lithium, Button Cells, Lead, Acid)	FREE
Car Batteries	FREE

Standard Fluorescent Lamps:

2 Feet	.25c
4 Feet	.50c
8 Feet	\$1.00
U Lamps, Circles and Compacts	.50c/lamp
HID Lamps	\$1.00/ lamp
PCB, DEHP, Magnetic and Electronic Ballasts	\$1.00

Hazardous Waste:

Most Televisions (Except Floor Models)	\$5.00
Computer Monitor	\$5.00
Large TV	\$10.00
Floor printer/copier	\$25.00

ALL PRICES ARE SUBJECT TO CHANGE
WITHOUT NOTICE

Unlisted items and loads are charged at
attendants' discretion.

Prices Updated/Effective 2-8-2023